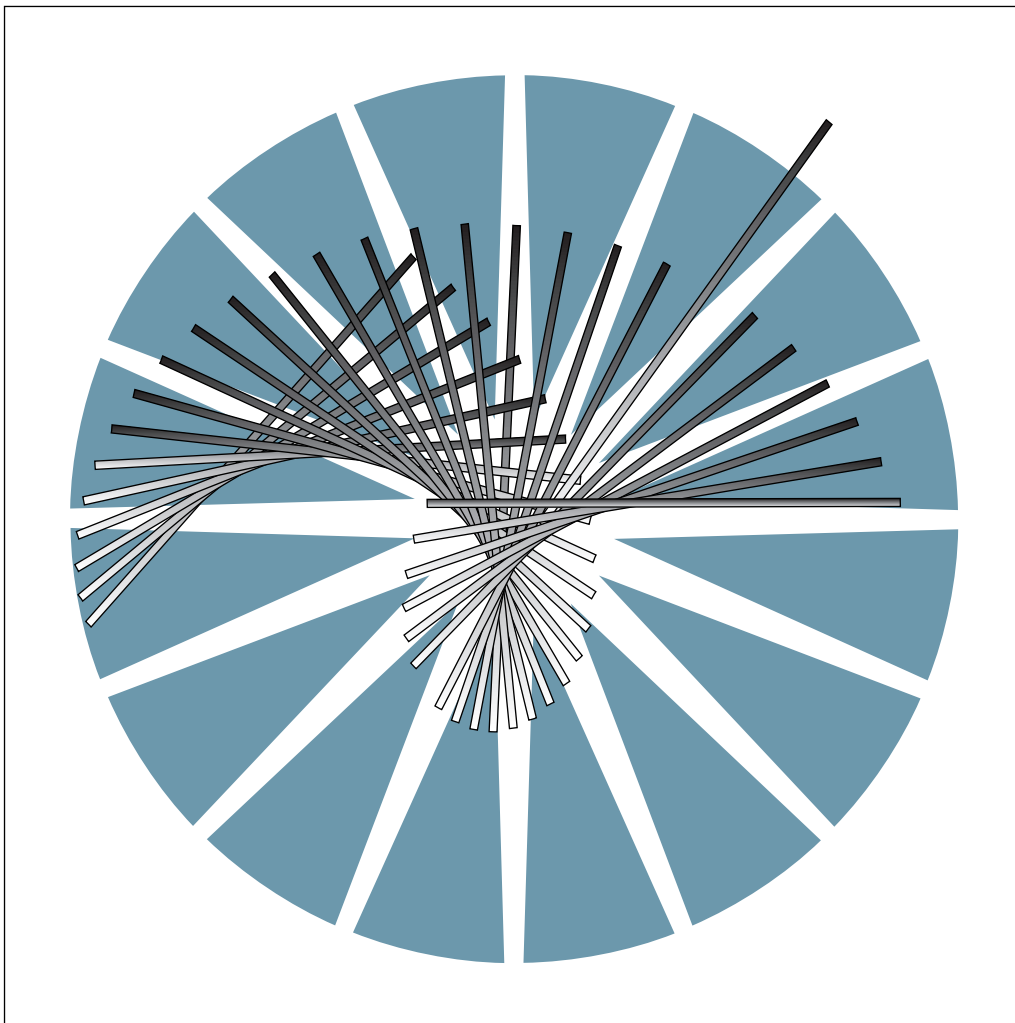


3746 Nways Multiprotocol Controller  
Models 900 and 950



# Parts Catalog





3746 Nways Multiprotocol Controller  
Models 900 and 950



# Parts Catalog

**Note!**

Before using this information and the product it supports, be sure to read the general information under "Notices" on page v.

## **Second Edition (December 1997)**

The information contained in this manual is subject to change from time to time. Any such changes will be reported in subsequent revisions. Changes have been made throughout this edition, and this manual should be read in its entirety.

Order publications through your IBM representative or the IBM branch office serving your locality. Publications are not stocked at the address given below.

A form for readers' comments appears at the back of this publication. If the form has been removed, address your comments to:

IBM France  
Centre d'Etudes et Recherches  
Service 0798 BP 79  
06610 La Gaude  
France

- FAX: (33) 93.24.77.97
- E-mail: FRIBMFGP at IBMMAIL
- IBM Internal Use: LGERCF at LGEPROFS
- Internet: rcf\_lagaude@vnet.ibm.com

When you send information to IBM, you grant IBM a non-exclusive right to use or distribute the information in any way it believes appropriate without incurring any obligation to you.

© **Copyright International Business Machines Corporation 1997. All rights reserved.**

Note to U.S. Government Users — Documentation related to restricted rights — Use, duplication or disclosure is subject to restrictions set forth in GSA ADP Schedule Contract with IBM Corp.

---

# Contents

<b>Notices</b> . . . . .	v
<b>About This Book</b> . . . . .	vii
How to Use This Parts Catalog . . . . .	viii
Part Listing Glossary . . . . .	ix
Visual Index 1, Front View . . . . .	x
Visual Index 2, Rear View . . . . .	xi
<b>Catalog Section</b> . . . . .	1
Assembly 1: Frame and Cover Assembly (Part 1 of 2) . . . . .	2
Assembly 2: Frame and Cover Assembly (Part 2 of 2) . . . . .	4
Assembly 3: Final Assembly (Part 1 of 8) . . . . .	6
Assembly 4: Final Assembly Model 900 (Part 2 of 8) . . . . .	8
Assembly 5: Final Assembly Model 950 (Part 3 of 8) . . . . .	10
Assembly 6: Final Assembly (Part 4 of 8) . . . . .	12
Assembly 7: Final Assembly (Part 5 of 8) . . . . .	14
Assembly 8: Final Assembly (Part 6 of 8) . . . . .	16
Assembly 9: Final Assembly (Part 7 of 8) . . . . .	18
Assembly 10: Final Assembly (Part 8 of 8) . . . . .	20
Assembly 11: AC Power Attachment Cord (Part 1 of 2) . . . . .	22
Assembly 12: Power Attachment Cord (Part 2 of 2) . . . . .	24
<b>Part Number Index</b> . . . . .	27



---

## Notices

References in this publication to IBM products, programs or services do not imply that IBM intends to make these available in all countries in which IBM operates. Any reference to an IBM product, program, or service is not intended to state or imply that only IBM's product, program, or service may be used. Any functionally equivalent product, program, or service that does not infringe any of IBM's intellectual property rights may be used instead of the IBM product, program, or service. Evaluation and verification of operation in conjunction with other products, except those expressly designated by IBM, is the user's responsibility.

IBM may have patents or pending patent applications covering subject matter in this document. The furnishing of this document does not give you any license to these patents. You can send license inquiries, in writing, to the IBM Director of Commercial Relations, IBM Corporation, Purchase, NY 10577, U.S.A.





---

## About This Book

This Parts Catalog (PC) contains listings and illustrations of all replaceable assemblies, subassemblies, and detail parts for the IBM 3746 Expansion Unit Models 900 and 950.

The information herein allows stock and maintenance personnel to identify, requisition, and issue replacement parts.

# How to Use This Parts Catalog

## HOW TO FIND PART INFORMATION

WHEN ASSEMBLY LOCATION IS KNOWN



PERFORM STEPS

(A) (B) (D)

WHEN ASSEMBLY NAME IS KNOWN



PERFORM STEPS

(B) (C) (D)

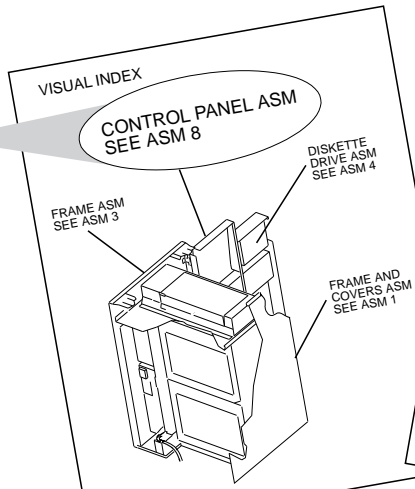
WHEN PART NUMBER IS KNOWN



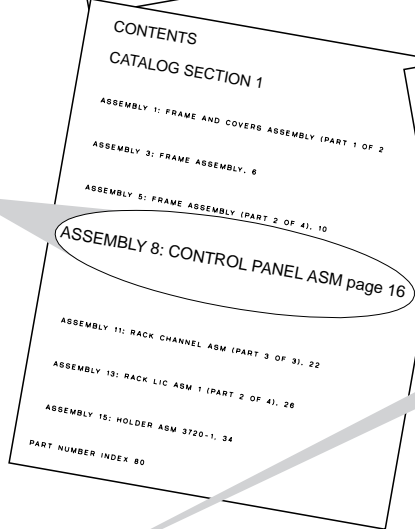
PERFORM STEPS

(E) (F) (G)

(A) Turn to the visual index then locate, by illustration, the assembly containing the part.



(B) Turn to the page for that assembly, then locate the part visually.



(C) Turn to the contents page, then locate, by name, the assembly containing the part.

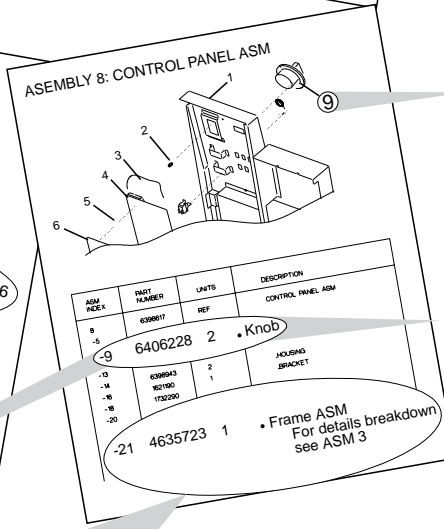
PART NUMBER INDEX

PART NUMBER	ASM INDEX	PAGE	PART NUMBER	ASM INDEX	PAGE	PART NUMBER	ASM INDEX	PAGE
000250	10-20	10	500250	10-20	10	900250	10-20	10
000251	10-21	10	500251	10-21	10	900251	10-21	10
000252	10-23	10	500252	10-23	10	900252	10-23	10
100255	20-21	15	540255	20-21	15	900255	20-21	15
100256	20-20	10	550256	20-20	10	900256	20-21	15
100257	20-24	17	560257	20-24	17			
100258	20-27	10	500258	30-27	10			
100259	13-25	15	500259	13-25	15			
100260	19-24	18	500260	19-24	18			
100261	19-26	18	600261	19-24	18			
100262	19-29	19	600262	19-26	18			
100263	19-28	18	600263	19-28	18			
100264	19-28	14						
100265	17-28	17						
300266	13-25	10						
200267	15-28	18						
200268	17-28	18						
200269	17-28	18						
200270	17-28	18						
200271	17-28	18						
200272	17-28	18						
200273	17-28	18						
200274	17-28	18						
200275	17-28	18						
200276	17-28	18						
200277	17-28	18						
200278	17-28	18						
200279	17-28	18						
200280	17-28	18						
200281	17-28	18						
200282	17-28	18						
200283	17-28	18						
200284	17-28	18						
200285	17-28	18						
200286	17-28	18						
200287	17-28	18						
200288	17-28	18						
200289	17-28	18						
200290	17-28	18						
200291	17-28	18						
200292	17-28	18						
200293	17-28	18						
200294	17-28	18						
200295	17-28	18						
200296	17-28	18						
200297	17-28	18						
200298	17-28	18						
200299	17-28	18						
200300	17-28	18						
200301	17-28	18						
200302	17-28	18						
200303	17-28	18						
200304	17-28	18						
200305	17-28	18						
200306	17-28	18						
200307	17-28	18						
200308	17-28	18						
200309	17-28	18						
200310	17-28	18						
200311	17-28	18						
200312	17-28	18						
200313	17-28	18						
200314	17-28	18						
200315	17-28	18						
200316	17-28	18						
200317	17-28	18						
200318	17-28	18						
200319	17-28	18						
200320	17-28	18						

(E) Turn to the part number index, then note the ASM and index number given for that part number.

(F) Turn to the ASM number given, then find the index number on the illustration.

(G) Find the corresponding index number in the accompanying listing to obtain the description and quantity of the part.



**NOTE:**  
If the desired item is part of a subassembly not broken down within that ASM, refer to the ASM assigned to the subassembly; locate the part visually; and obtain the part number description, and quantity from the accompanying listing.

## Part Listing Glossary

① **NONE** When this notation appears in the Part Number column, it denotes a part or group of parts that have not been assigned a part number. The part number of cards and boards is not given because it is subject to frequent changes.

② **NR** this notation in the Units column denotes a part not recommended for field replacement.

③ **AR** this notation in the Units column indicates that the quantity is as required.

④ **SIMILAR ASSEMBLIES** If two or more assemblies contain a majority of identical parts, they are combined in the same listing. Parts common to assemblies are illustrated and listed by one index number.

Parts specific to one or the other of the assemblies are listed separately and identified either in the description of the part, or

⑤ **REF** this notation in the Units column indicates that the listing of the assembly is repeated and reference should be made to its previous listing for the quantity required.

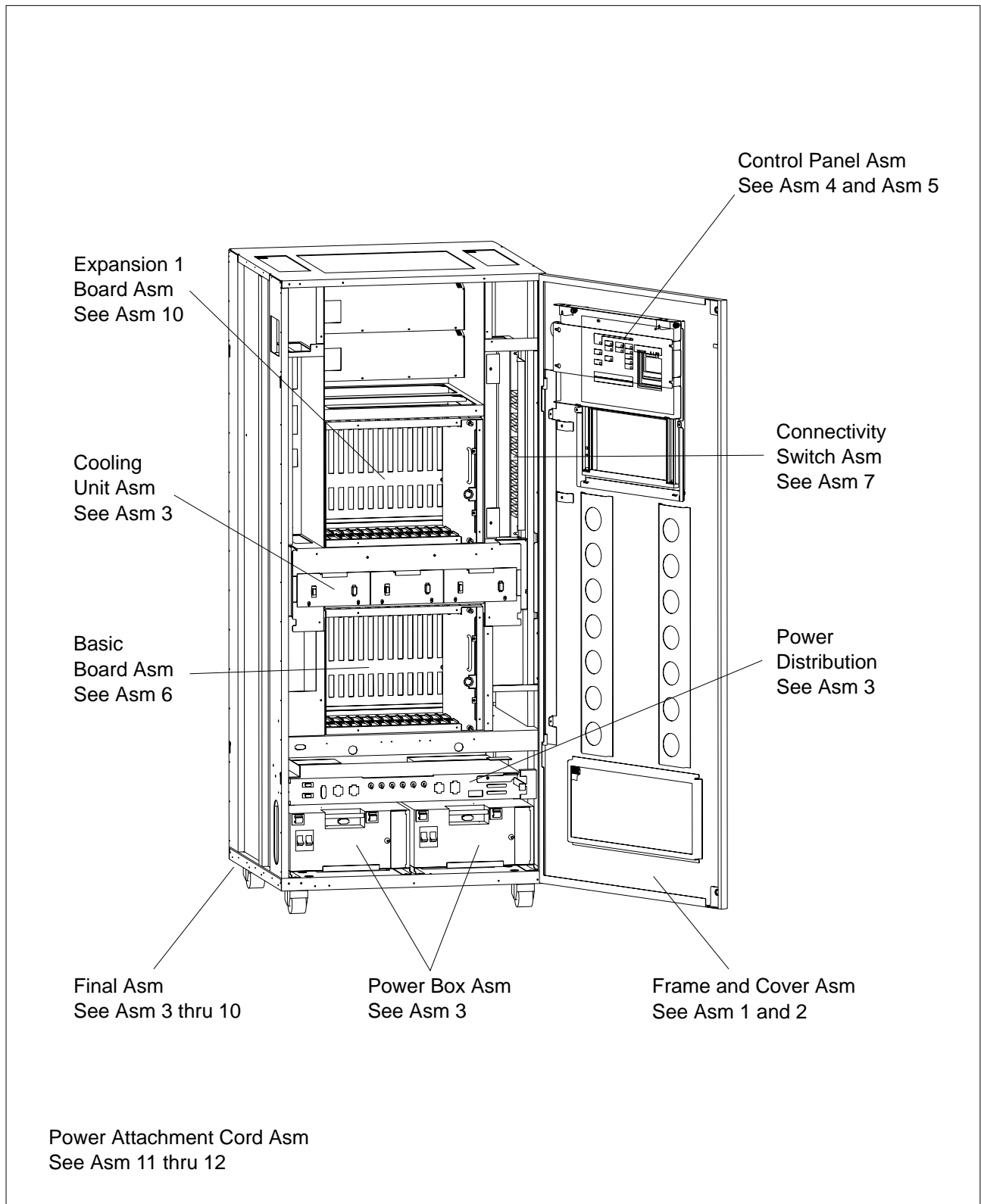
⑥ **INDENTATION** the indentation of items in the Description column of the table below shows the relationship between assemblies, subassemblies and detail parts. For example:

Not dot		MAIN ASSEMBLY
One dot	●	Detail parts of main ASM
One dot	●	Assembly within main ASM
Two dots	● ●	Detail part of 1 dot ASM
Two dots	● ●	Assembly within 1 dot ASM
Three dots	● ● ●	Detail parts of 2 dot ASM

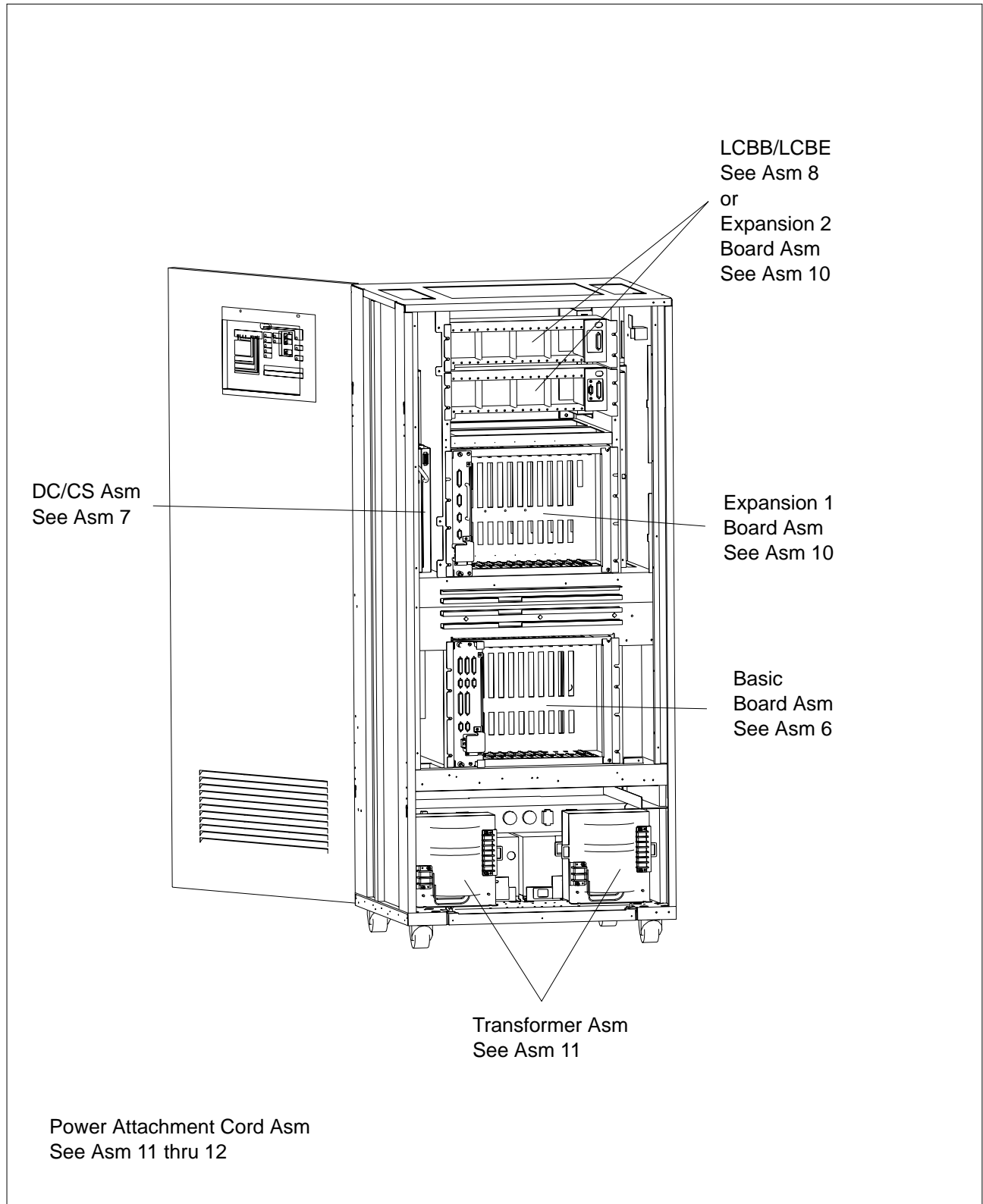
Asm-Index	Part Number	Units	Description
8-	NONE	REF	Final Assembly
-1	1501460	1	● Disk Drive ASM
-2	6426882	1	● Bracket
-3	10170	4	● Screw, Slot Bind HD-6/32 X 0.250 LG
-4	NONE	1	● Power Attachment Cord
-5	6398770	8	● Modular Dummy
-6	6398942	1	● Overlay-English
-6	6427178	1	● Overlay-French
-6	6427181	1	● Overlay-Portuguese
-6	6428182	1	● Overlay-Spanish
-7	6398936	NR	● Cover
-8	1621197	AR	● Screw, Pan HD-M4 X 6 LG

Annotations in the table: Arrows point from circled numbers 1-6 to specific cells. 1 points to Part Number 'NONE' in row -4. 2 points to Units '1' in row -6. 3 points to Units 'AR' in row -8. 4 points to Asm-Index '-6' for rows 6427178, 6427181, and 6428182. 5 points to Units '1' in row -1. 6 points to the description 'For detail breakdown See Assembly 9' in row -5.

## Visual Index 1, Front View



## Visual Index 2, Rear View

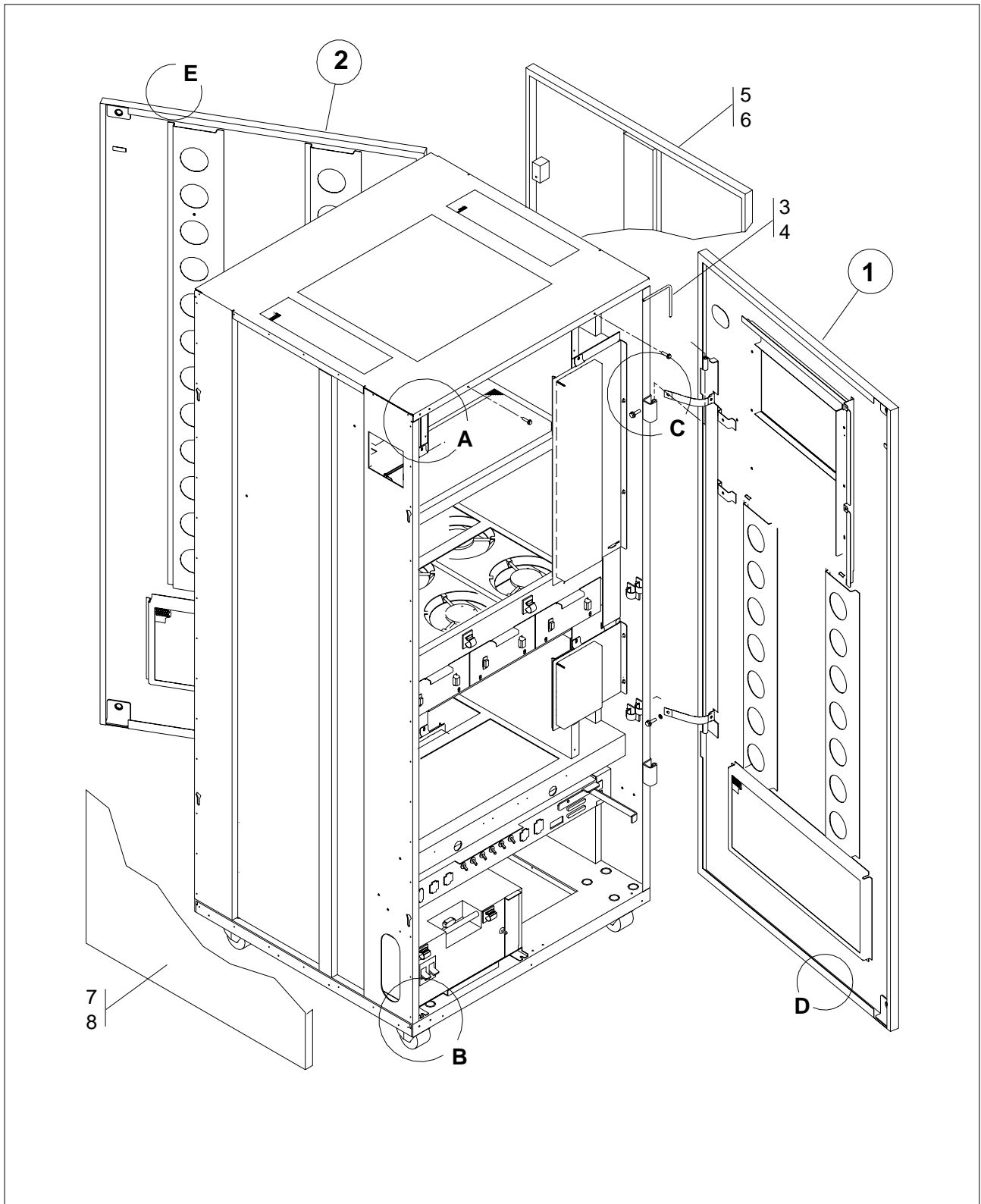




---

# Catalog Section

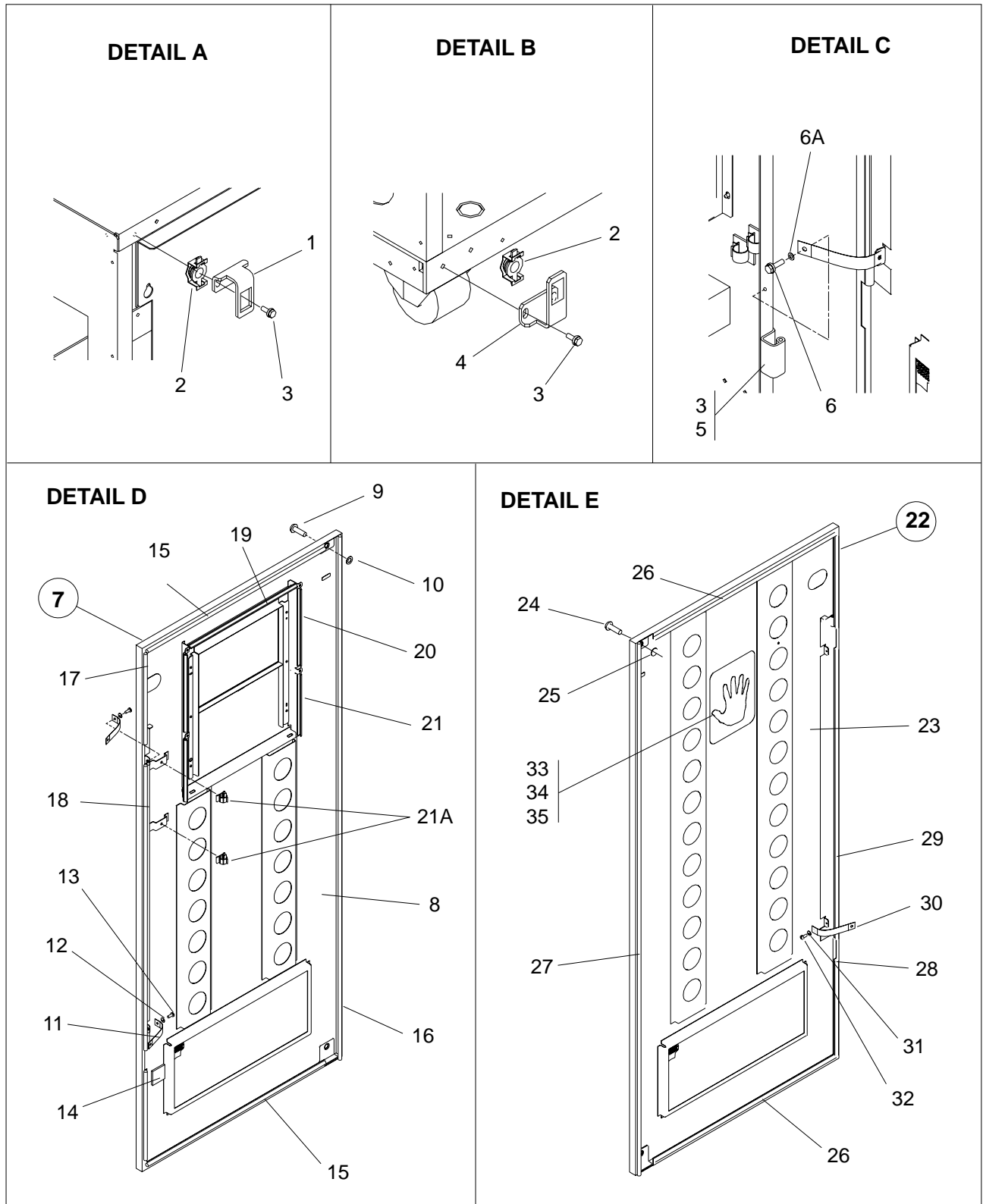
## Assembly 1: Frame and Cover Assembly (Part 1 of 2)





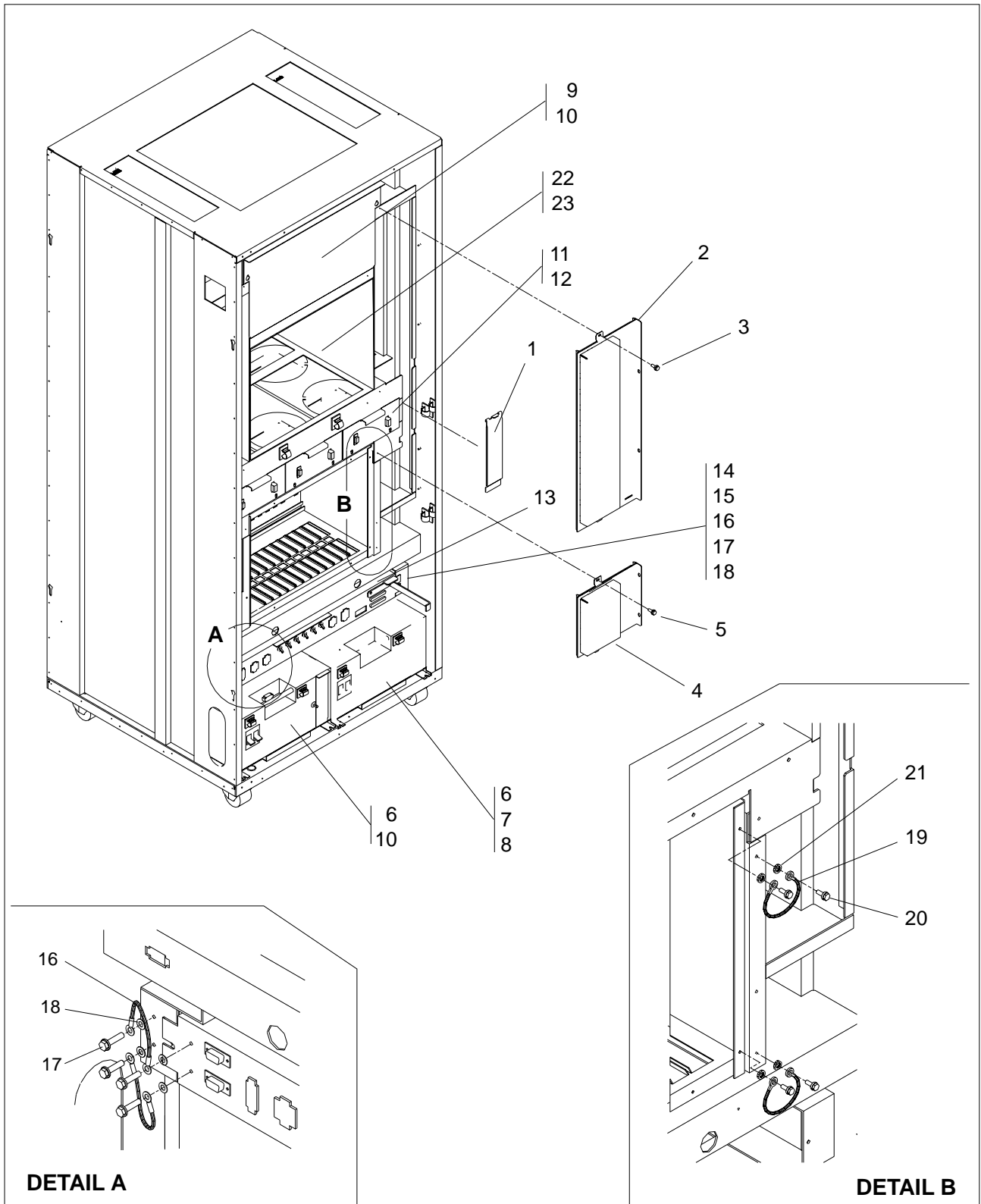
Asm- Index	Part Number	Units	Description
1-	NONE	REF	Frame and Cover Assembly (Part 1 of 2)
-1	34F1448	1	<ul style="list-style-type: none"> <li>• Front Cover ASM</li> </ul>
			For Detail Breakdown see ASM 2.
-2	34F1449	1	<ul style="list-style-type: none"> <li>• Rear Cover Assembly</li> </ul>
			For Detail Breakdown see ASM 2.
-3	09G3003	4	<ul style="list-style-type: none"> <li>• Shaft</li> </ul>
-4	09G3004	4	<ul style="list-style-type: none"> <li>• Clamp</li> </ul>
-5	6495760	1	<ul style="list-style-type: none"> <li>• End Cover</li> </ul>
-6	1621212	4	<ul style="list-style-type: none"> <li>• Screw, Pan HD- M5 X 16 LG</li> </ul>
-7	58G5314	1	<ul style="list-style-type: none"> <li>• End Cover</li> </ul>
-8	1621212	4	<ul style="list-style-type: none"> <li>• Screw, Pan HD- M5 X 16 LG</li> </ul>

## Assembly 2: Frame and Cover Assembly (Part 2 of 2)



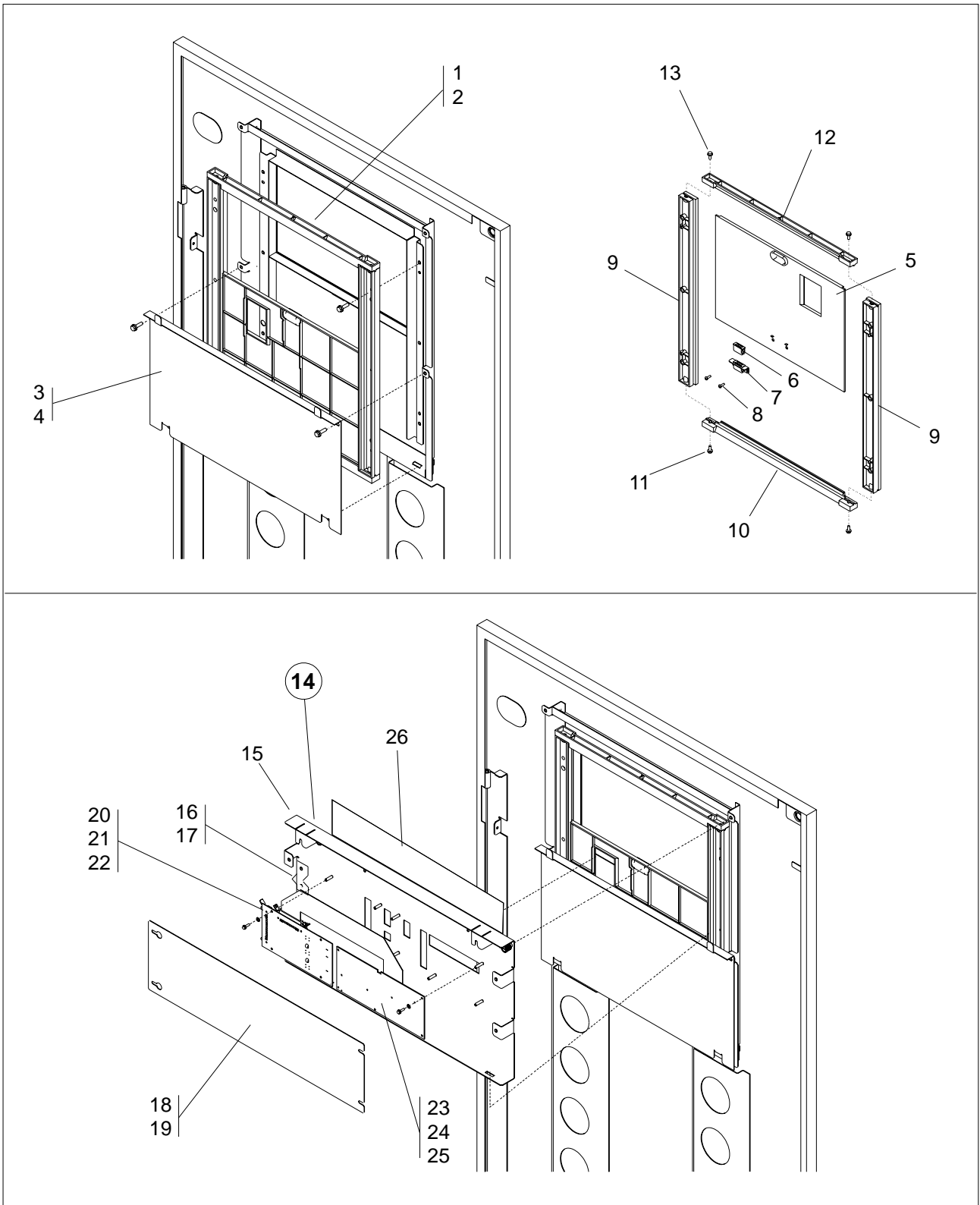
Asm- Index	Part Number	Units	Description
2-	NONE	REF	Frame and Cover Assembly (Part 2 of 2)
-1	6496007	2	• Bracket
-2	6406241	2	• Latch
-3	1621210	AR	• Screw,Pan HD- M5 X 10 LG
-4	63F2448	2	• Bracket
-5	6494763	4	• Bracket
-6	1621197	3	• Screw,Pan HD- M4 X 6 LG
-6A	17G5852	3	• Lockwasher,Ext,M4
-7	34F1448	REF	• Front Cover Assembly
-8	03F7483	1	• • Front Cover Frame
-9	58X9250	2	• • Stud
-10	1693573	2	• • Retainer
-11	5267931	2	• • Jumper Assembly
-12	17G5852	2	• • Lockwasher,Ext,M4
-13	1621191	2	• • Screw,Pan HD- M4 X 10 LG
-14	03F4471	1	• • Foam
-15	65X8879	2	• • Gasket
-16	6495997	1	• • Gasket
-17	6496002	2	• • Gasket
-18	6495999	1	• • Gasket
-19	03F4844	1	• • Gasket, 400 mm LG
-20	03F4844	2	• • Gasket, 250 mm LG
-21	03F4844	2	• • Gasket, 200 mm LG
-21A	09G3002	2	• • Clamp
-22	34F1449	REF	• Rear Cover Assembly
-23	03F7484	1	• • Rear Cover Frame
-24	6406240	2	• • Stud
-25	1693573	2	• • Ring
-26	65X8879	2	• • Gasket
-27	6495997	1	• • Gasket
-28	6496002	2	• • Gasket
-29	6495999	1	• • Gasket
-30	5267931	1	• • Jumper Assembly
-31	17G5852	1	• • Lockwasher,Ext,M4
-32	1621191	1	• • Screw,Pan HD- M4 X 10 LG
-33	03F7761	1	• • Panel ESD Discharge
-34	1621197	1	• • Screw Pan HD-M4 X 6 LG
-35	1622290	1	• • Large Flat Washer

### Assembly 3: Final Assembly (Part 1 of 8)



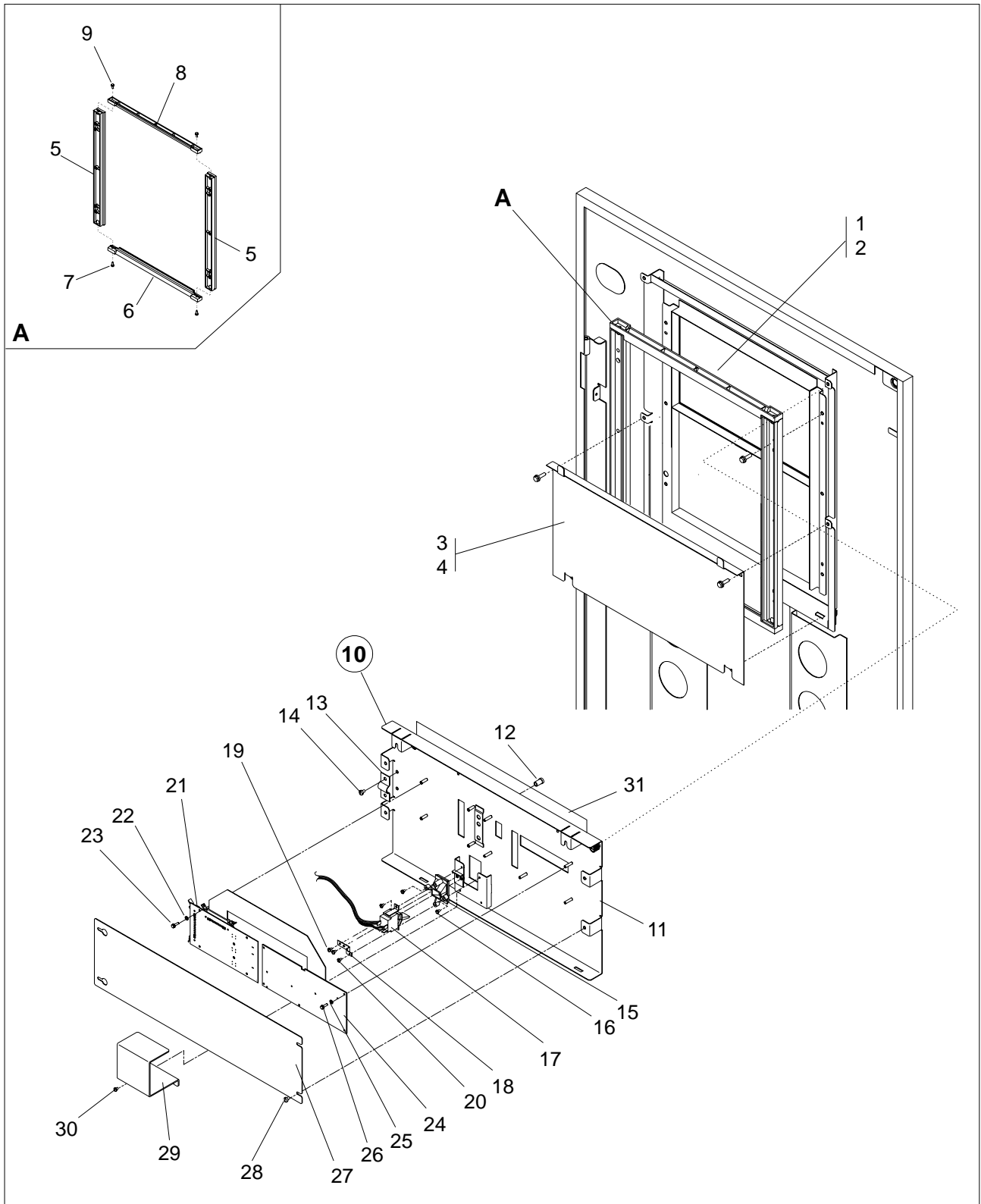
<b>Asm- Index</b>	<b>Part Number</b>	<b>Units</b>	<b>Description</b>
3-	NONE	REF	Final Assembly (Part 1 of 8)
-1	63F2462	1	• Plate
-2	63F2480	1	• Cover
-3	1621191	2	• Screw,Pan HD- M4 X 10 LG
-4	11F6256	1	• Cover
-5	1621191	2	• Screw,Pan HD- M4 X 10 LG
-6	03F7610	1	• AC Primary Power Box Assembly, 50 Hz
-6	03F7609	1	• AC Primary Power Box Assembly, 60 Hz
-7	03F7620	1	• DC Box Assembly
-8	1621210	6	• Screw,Pan HD- M5 X 10 LG
-9	72F1198	1	• Cover
-10	1621191	2	• Screw,Pan HD- M4 X 10 LG
-11	03F7491	3	• Cooling Unit Assembly
-12	1621210	6	• Screw,Pan HD- M5 X 10 LG
-13	03F7664	1	• Filter
-14	03F7625	1	• Distribution Box Assembly
-15	1621210	2	• Screw,Pan HD- M5 X 10 LG
-16	72F1250	2	• Jumper
-17	1621191	4	• Screw,Pan HD- M4 X 10 LG
-18	17G5852	4	• Lockwasher,Ext,M4
-19	72F1250	2	• Jumper
-20	1621191	4	• Screw,Pan HD- M4 X 10 LG
-21	17G5852	4	• Lockwasher,Ext,M4
-22	72F1197	1	• Dummy Enclosure When Enclosure Expansion not present
-23	1621210	4	• Screw, Pan HD- M5 X 10 LG

## Assembly 4: Final Assembly Model 900 (Part 2 of 8)



Asm- Index	Part Number	Units	Description
4-	NONE	REF	Final Assembly Model 900 (Part 2 of 8)
-1	72F1013	1	• Cover Assembly
-2	1621194	6	• Screw,Pan HD- M4 X 20 LG
-3	72F1003	1	• Cover
-4	1621197	2	• Screw,Pan HD- M4 X 6 LG
-5	72F1000	1	• Cover Slide
-6	72F1229	1	• Magnetic Catch
-7	72F1033	1	• Bracket
-8	1621170	2	• Screw, Pan HD-M3 X 6 LG
-9	72F1021	2	• Slide
-10	72F1022	1	• Spacer
-11	1621191	2	• Screw,Pan HD- M4 X 10 LG
-12	72F1022	1	• Spacer
-13	1621191	2	• Screw,Pan HD- M4 X 10 LG
-14	03F7492	1	• Gate Assembly
-15	72F1002	1	• • Gate Frame
-16	2980188	1	• • Clamp
-17	1621191	6	• • Screw,Pan HD- M4 X 10 LG
-18	11F6272	1	• • Cover
-19	1621191	4	• • Screw,Pan HD- M4 X 10 LG
-20	NONE	1	• Panel Key Board
-21	1622302	4	• Washer
-22	1621170	4	• Screw,Pan HD- M3 X 6 LG
-23	NONE	1	• Panel Key Board
-24	1622302	5	• Washer
-25	1621170	5	• Screw,Pan HD- M3 X 6 LG
-26	34F1434	1	• Overlay English
-26	34F1436	1	• Overlay French
-26	34F1438	1	• Overlay German
-26	34F1440	1	• Overlay Italian
-26	34F1442	1	• Overlay Spanish
-26	34F1444	1	• Overlay Japan

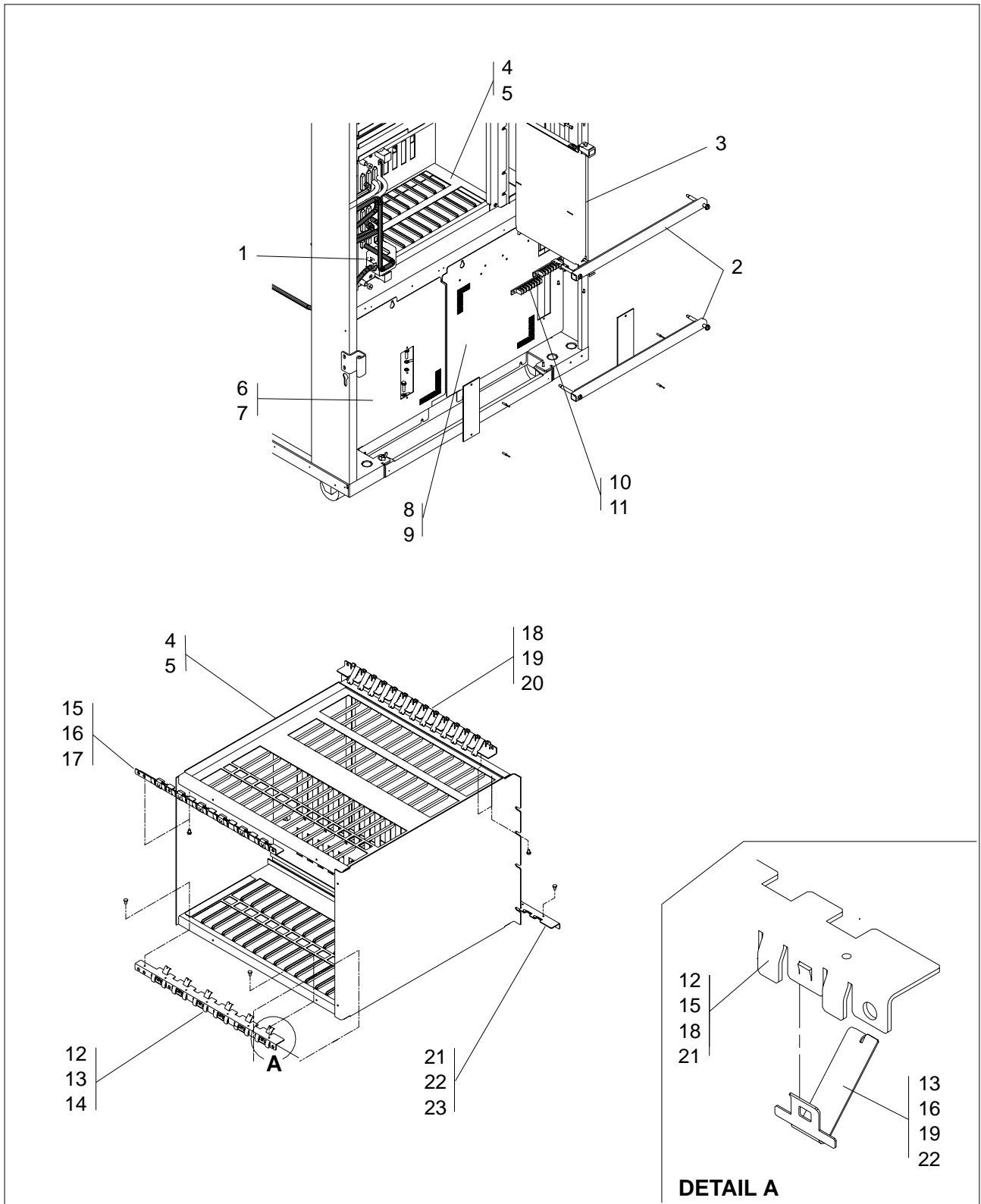
# Assembly 5: Final Assembly Model 950 (Part 3 of 8)





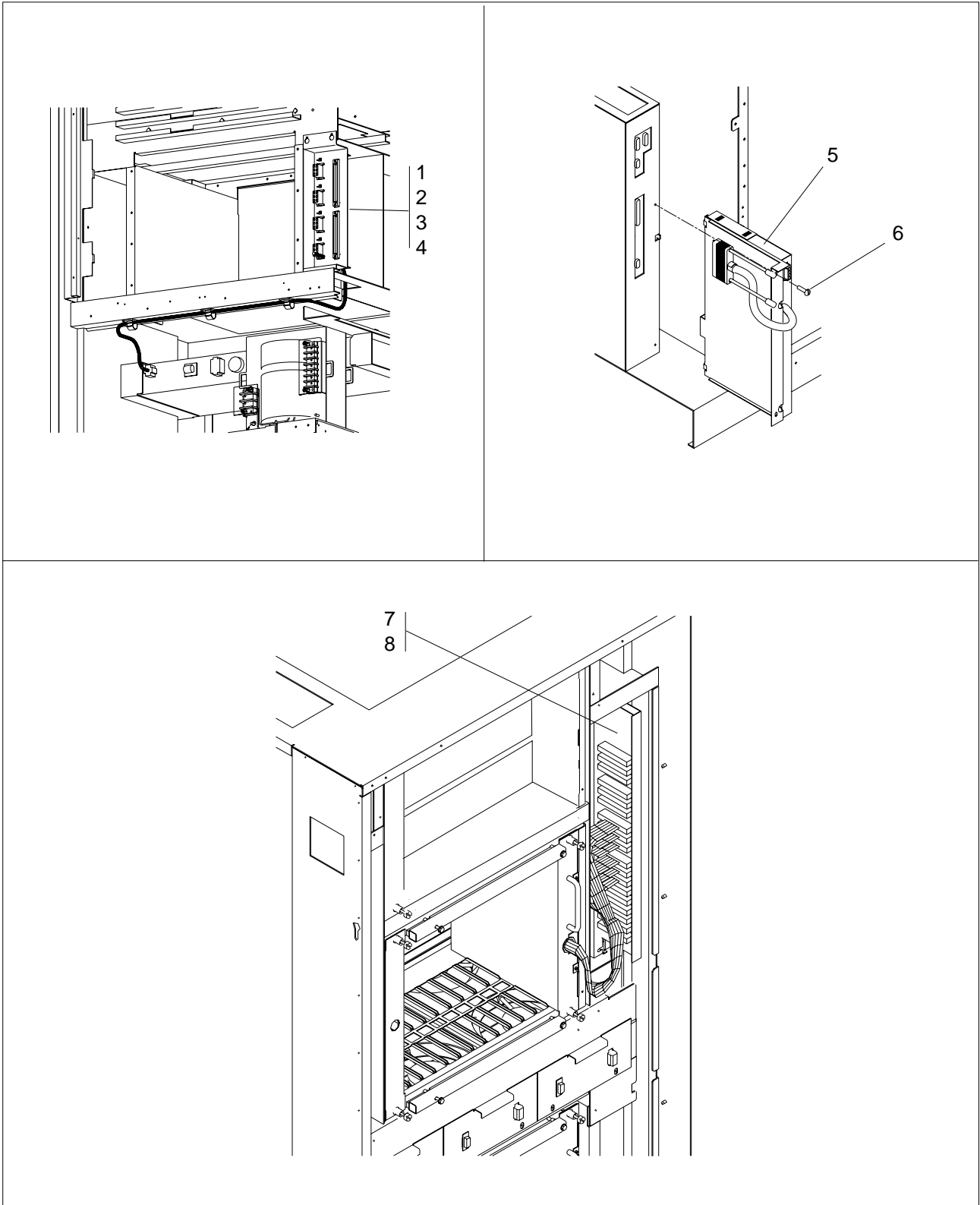
Asm- Index	Part Number	Units	Description
5-	NONE	REF	Final Assembly Model 950 (Part 3 of 8)
-1	72F1013	1	• Cover Assembly
-2	1621194	6	• Screw,Pan HD- M4 X 20 LG
-3	72F1003	1	• Cover
-4	1621197	2	• Screw,Pan HD- M4 X 6 LG
-5	72F1021	2	• Slide
-6	72F1022	1	• Spacer
-7	1621191	2	• Screw,Pan HD- M4 X 10 LG
-8	72F1022	1	• Spacer
-9	1621191	2	• Screw,Pan HD- M4 X 10 LG
-10	58G5514	1	• Gate Assembly
-11	58G5505	1	• • Gate Frame
-12	03F7551	1	• • Holder
-13	2980188	1	• • Clamp
-14	1621191	6	• • Screw,Pan HD- M4 X 10 LG
-15	4521357	1	• Housing
-16	1621172	2	• Screw, Pan HD-M3 X 10 LG
-17	58G5506	1	• Cable Assembly
-18	43G3154	1	• Bracket
-19	1621181	2	• Screw, Pan HD-M3.5 X 6 LG
-20	80651	2	• Screw
-21	NONE	1	• Panel Key Board
-22	1622302	4	• Washer
-23	1621170	4	• Screw,Pan HD- M3 X 6 LG
-24	NONE	1	• Panel Key Board
-25	1622302	5	• Washer
-26	1621170	5	• Screw,Pan HD- M3 X 6 LG
-27	11F6272	1	• Cover
-28	1621191	4	• Screw,Pan HD- M4 X 10 LG
-29	58G5507	1	• Cover
-30	1621172	2	• Screw,Pan HD- M3 X 10 LG
-31	58G5525	1	Overlay English
-31	58G5526	1	Overlay French
-31	58G5527	1	Overlay German
-31	58G5528	1	Overlay Italian
-31	58G5529	1	Overlay Spanish
-31	58G5530	1	Overlay Japan

## Assembly 6: Final Assembly (Part 4 of 8)



Asm- Index	Part Number	Units	Description
6-	NONE	REF	Final Assembly (Part 4 of 8)
-1	NONE	REF	• Card Assembly SPD1
-2	63F2559	4	• Bracket shipping
-3	03F7522	1	• Dummy LIC
-4	61F4611	1	• Basic Enclosure Assembly
-5	1621210	8	• Screw,Pan HD- M5 X 10 LG
-6	61F4571	1	• Cover
-7	1621210	2	• Screw,Pan HD- M5 X 10 LG
-8	03F7647	1	• Cover
-9	1621210	2	• Screw,Pan HD- M5 X 10 LG
-10	84X5763	4	• Guide
-11	1621191	8	• Screw,Pan HD- M4 X 10 LG
-12	61F4554	1	• Bracket
-13	61F4553	6	• Spring
-14	1621170	7	• Screw,Pan HD- M3 X 6 LG
-15	61F4555	1	• Bracket
-16	61F4553	6	• Spring
-17	1621170	7	• Screw,Pan HD- M3 X 6 LG
-18	61F4557	1	• Bracket
-19	61F4553	13	• Spring
-20	1621170	7	• Screw,Pan HD- M3 X 6 LG
-21	61F4556	1	• Bracket
-22	61F4553	13	• Spring
-23	1621170	7	• Screw,Pan HD- M3 X 6 LG

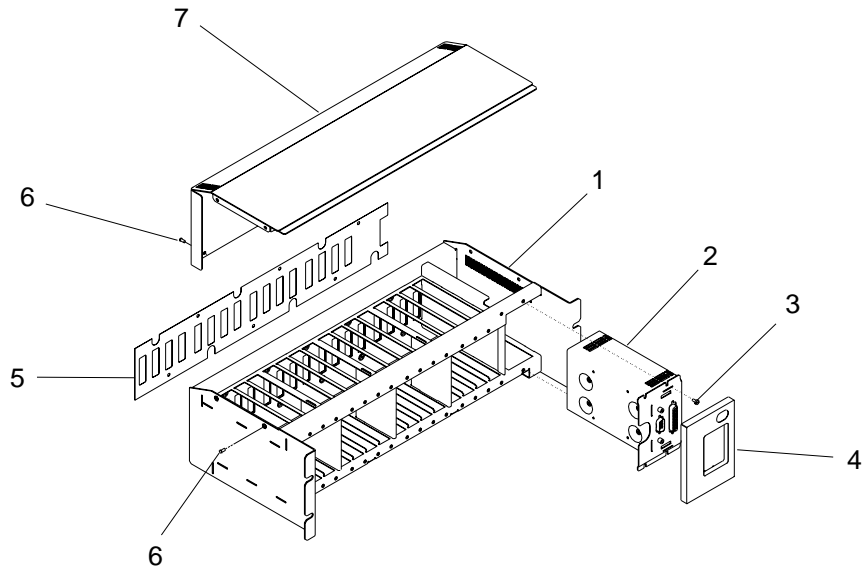
## Assembly 7: Final Assembly (Part 5 of 8)



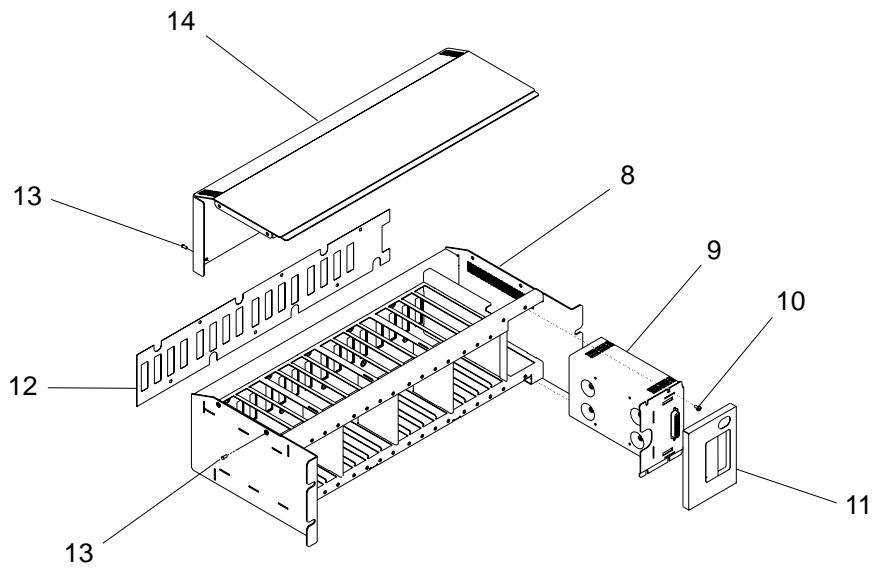
Asm- Index	Part Number	Units	Description
7-	NONE	REF	Final Assembly (Part 5 of 8)
-1	61F4561	1	• RPO Assembly
-2	5351156	1	• Relay
-3	5351163	1	• Clamp
-4	1621197	3	• Screw,Pan HD- M4 X 6 LG
-5	72F1165	1	• DC Switch
-6	1621197	2	• Screw,Pan HD- M4 X 6 LG
-7	NONE	1	• Connectivity Switch Assembly
-8	1621197	2	• Screw,Pan HD- M4 X 6 LG

## Assembly 8: Final Assembly (Part 6 of 8)

LCBB

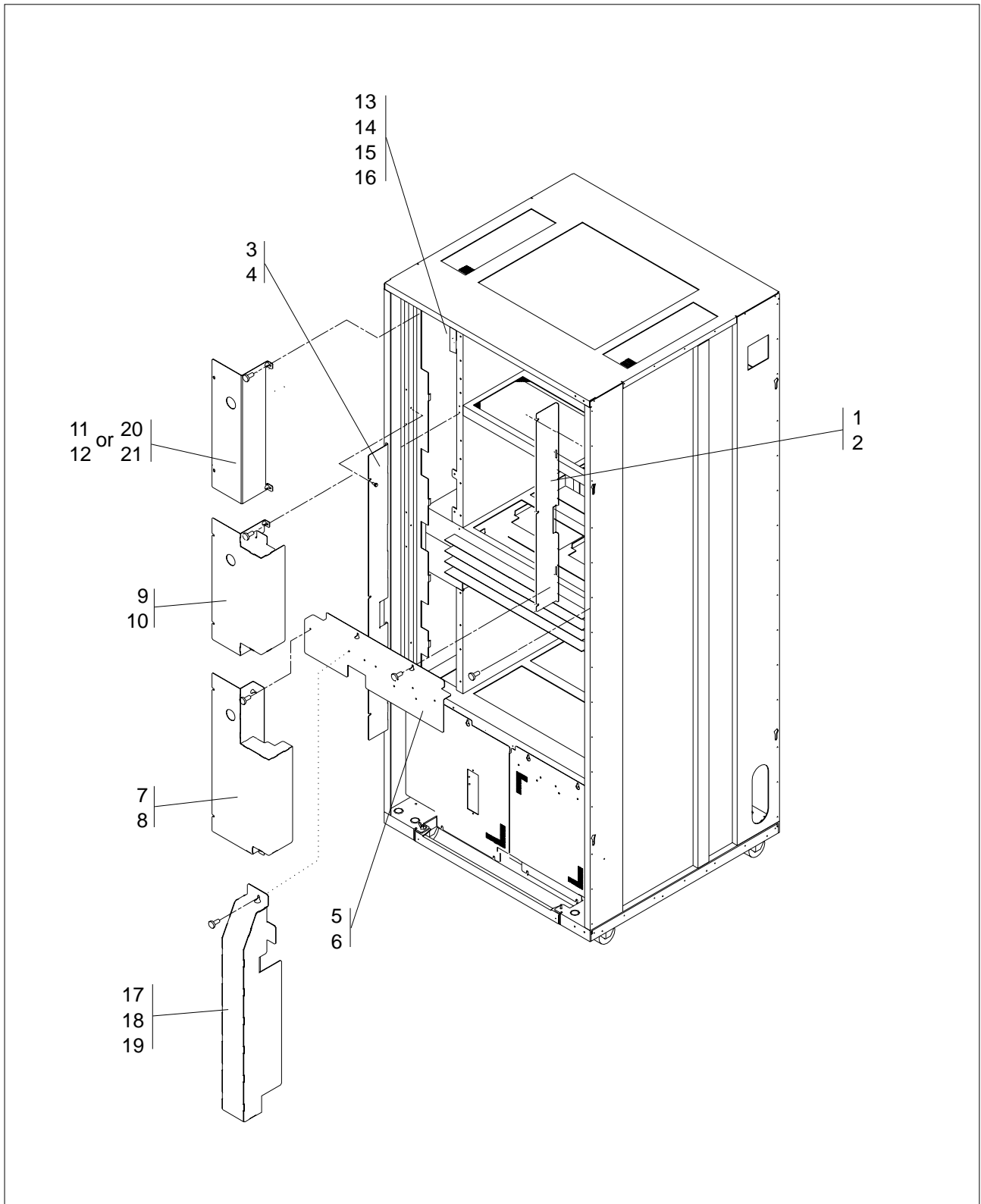


LCBE



Asm- Index	Part Number	Units	Description
8-	NONE	REF	Final Assembly (Part 6 of 8)
-1	NONE	REF	• Enclosure LCEB
-2	NONE	REF	• Power SMU LCPB
-3	1621170	4	• Screw, Pan HD- M3 X 6 LG
-4	63F2498	1	• Panel
-5	63F2501	1	• Isolation Foil
-6	65X8654	8	• Rivet
-7	61F4592	1	• Cover
-8	NONE	REF	• Enclosure LCEE
-9	NONE	REF	• Power SMU LCPE
-10	1621170	4	• Screw, Pan HD- M3 X 6 LG
-11	17G5839	1	• Panel
-12	63F2501	1	• Isolation Foil
-13	65X8654	8	• Rivet
-14	61F4592	1	• Cover

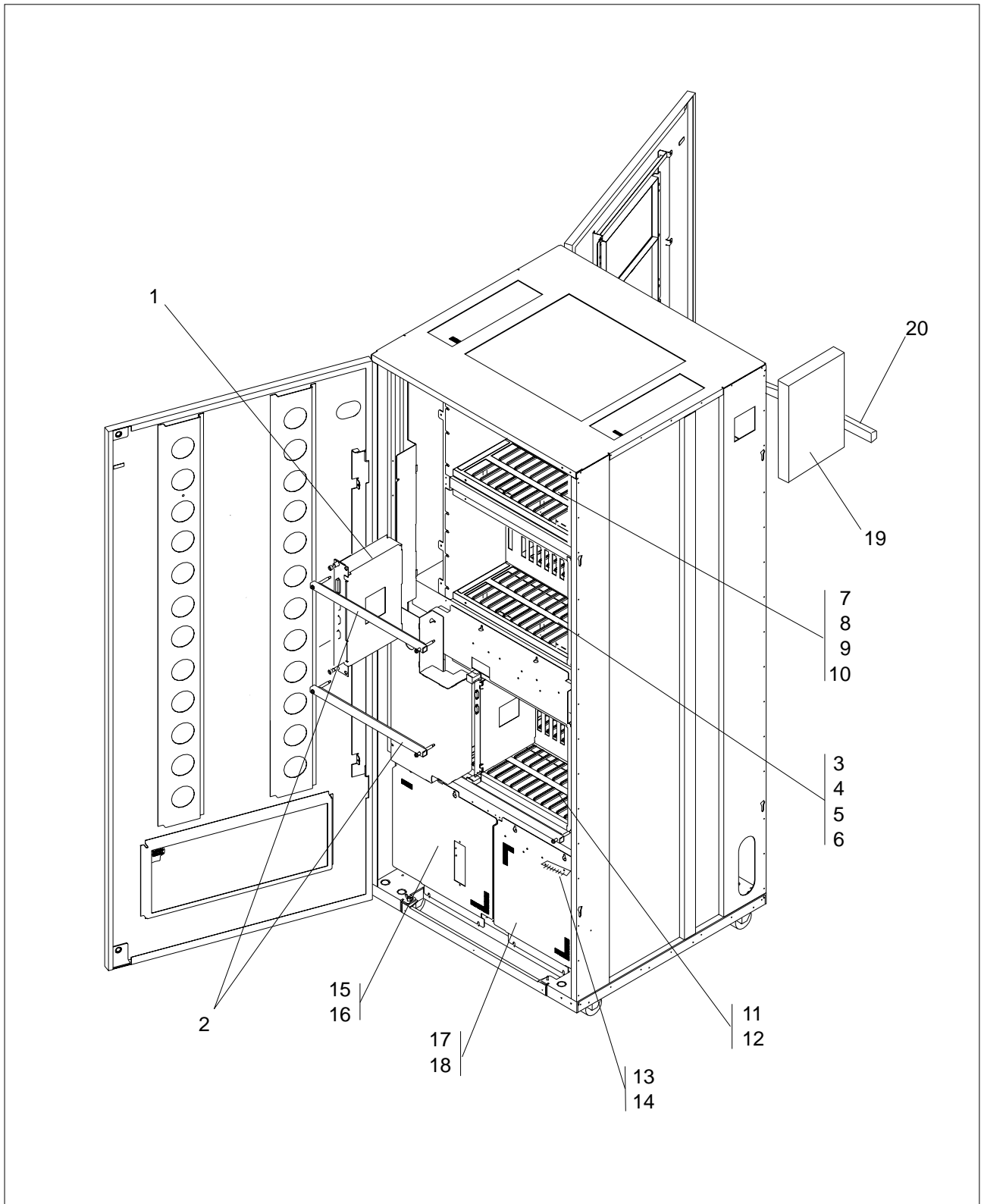
## Assembly 9: Final Assembly (Part 7 of 8)





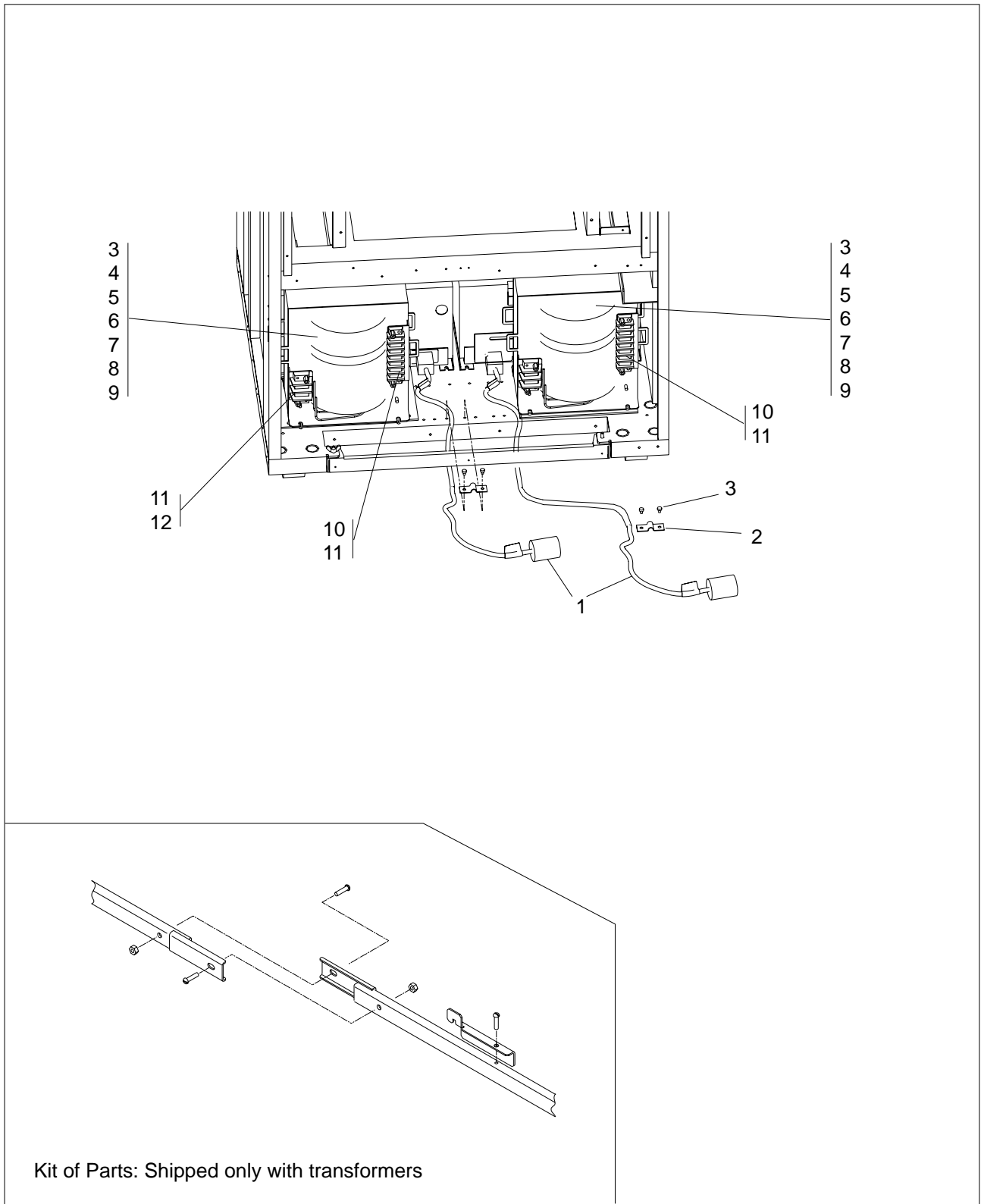
Asm- Index	Part Number	Units	Description
9-	NONE	REF	Final Assembly (Part 7 of 8)
-1	76F9366	1	• Cover
-2	1621191	3	• Screw,Pan HD- M4 X 10 LG
-3	76F9367	1	• Cover
-4	1621191	3	• Screw,Pan HD- M4 X 10 LG
-5	72F1007	1	• Cover
-6	1621191	2	• Screw,Pan HD- M4 X 10 LG
-7	72F1009	1	• Cover
-8	1621191	4	• Screw,Pan HD- M4 X 10 LG
-9	72F1010	1	• Cover
-10	1621191	4	• Screw,Pan HD- M4 X 10 LG
-11	72F1011	1	• Cover
			When Expansion 2 Board ASM is not Present.
-12	1621191	4	• Screw,Pan HD- M4 X 10 LG
-13	72F1047	2	• Bracket
-14	61F4541	2	• Connector
-15	61F4540	2	• Connector
-16	1621191	4	• Screw,Pan HD- M4 X 10 LG
-17	17G5787	1	• Cover for one CBC
			For Model 900 only
-18	17G5788	1	• Cover for two CBC
			For Model 900 only
-19	1621191	2	• Screw,Pan HD- M4 X 10 LG
			For Model 900 only
-20	72F1010	1	• Cover
			When Expansion 2 Board ASM is Present.
-21	1621191	4	• Screw,Pan HD- M4 X 10 LG

# Assembly 10: Final Assembly (Part 8 of 8)



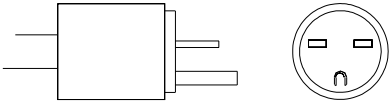
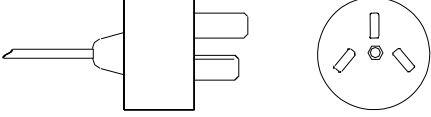
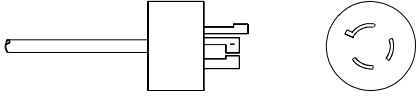
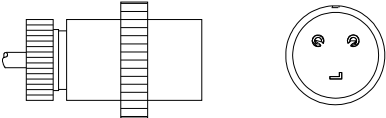
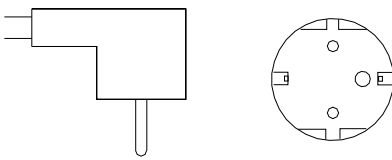
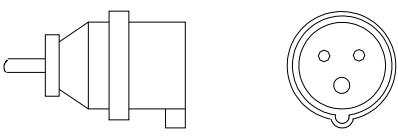
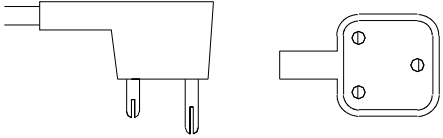
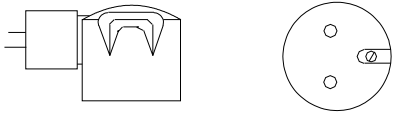
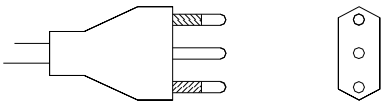
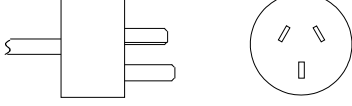
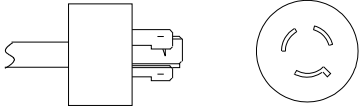
Asm- Index	Part Number	Units	Description
10-	NONE	REF	Final Assembly (Part 8 of 8)
-1	NONE	REF	• Card Assembly SPD2
-2	63F2559	2	• Bracket shipping
-3	61F4612	1	• Expansion 1 Enclosure Assembly
-4	1621210	8	• Screw,Pan HD- M5 X 10 LG
-5	72F1197	1	• Dummy Enclosure (Expansion 1)
-6	1621210	4	• Screw,Pan HD- M5 X 10 LG
-7	61F4612	1	• Expansion 2 Enclosure Assembly
-8	1621210	8	• Screw,Pan HD- M5 X 10 LG
-9	72F1198	1	• Dummy Enclosure (Expansion 2)
-10	1621191	2	• Screw,Pan HD- M4 X 10 LG
-11	61F4611	1	• Basic Enclosure Assembly
-12	1621210	8	• Screw,Pan HD- M5 X 10 LG
-13	84X5763	6	• Guide
-14	1621191	12	• Screw,Pan HD- M4 X 10 LG
-15	61F4571	1	• Cover
-16	1621210	2	• Screw,Pan HD- M5 X 10 LG
-17	03F7647	1	• Cover
-18	1621210	2	• Screw,Pan HD- M5 X 10 LG
-19	NONE	1	• Card CSCE Assembly
-20	63F2558	2	• Bracket Shipping

## Assembly 11: AC Power Attachment Cord (Part 1 of 2)



<b>Asm- Index</b>	<b>Part Number</b>	<b>Units</b>	<b>Description</b>
11-	NONE	REF	AC Power Attachment Cord (Part 1 of 3)
-1	NONE	2	<ul style="list-style-type: none"> <li>• AC Power Attachment Cord Assembly</li> </ul> <p style="margin-left: 40px;">For Detail Breakdown see Asm 8.</p>
-2	2980188	2	<ul style="list-style-type: none"> <li>• Clamp</li> </ul>
-3	1621210	4	<ul style="list-style-type: none"> <li>• Screw,Pan HD- M5 X 10 LG</li> </ul>
-4	34F1425	4	<ul style="list-style-type: none"> <li>• Pad</li> </ul>
-5	1621231	2	<ul style="list-style-type: none"> <li>• Screw,Pan HD- M6 X 16 LG</li> </ul>
-6	17G5921	2	<ul style="list-style-type: none"> <li>• Transformer,50 Hz</li> </ul> <p style="margin-left: 40px;">Shipped with tool handles</p>
-6	17G5922	2	<ul style="list-style-type: none"> <li>• Transformer,60 Hz</li> </ul> <p style="margin-left: 40px;">Shipped with tool handles</p>
-7	1621596	8	<ul style="list-style-type: none"> <li>• Screw,Hex HD- M6 X 16 LG</li> </ul>
-8	34F1425	4	<ul style="list-style-type: none"> <li>• Absorber</li> </ul>
-9	1621596	8	<ul style="list-style-type: none"> <li>• Screw,Hex HD- M6 X 16 LG</li> </ul>
-10	438890	2	<ul style="list-style-type: none"> <li>• Shield</li> </ul>
-11	1621181	4	<ul style="list-style-type: none"> <li>• Screw,Pan HD- M3.5 X 6 LG</li> </ul>
-12	61F4549	2	<ul style="list-style-type: none"> <li>• Shield</li> </ul>

## Assembly 12: Power Attachment Cord (Part 2 of 2)

<p><b>5</b></p>  <p>250 V 15 A</p>	<p><b>32</b></p>  <p>250 V 16 A</p>
<p><b>10</b></p>  <p>250 V 15 A</p>	<p><b>34</b></p>  <p>250 V 15 A</p>
<p><b>18</b></p>  <p>250 V 16 A</p>	<p><b>46</b></p>  <p>250 V 16 A</p>
<p><b>22</b></p>  <p>250 V 16 A</p>	<p><b>49</b></p>  <p>250 V 16 A</p>
<p><b>25</b></p>  <p>250 V 16 A</p>	<p><b>54</b></p>  <p>250 V 15 A</p>
<p><b>29</b></p>  <p>250 V 18 A</p>	

Asm- Index	Part Number	Units	Description
12-	NONE	REF	Power Attachment Cord (Part 3 of 3)
-5	14F1548	1	• Power Attachment Cord Assembly, 4,30 m
-10	14F1550	1	• Power Attachment Cord Assembly, 4,30 m
-18	14F1554	1	• Power Attachment Cord Assembly, 4,30 m
-22	14F1557	1	• Power Attachment Cord Assembly, 4,30 m
-25	14F1560	1	• Power Attachment Cord Assembly, 4,30 m
-29	14F1553	1	• Power Attachment Cord Assembly, 4,30 m
-32	14F1561	1	• Power Attachment Cord Assembly, 4,30 m
-34	86F2645	1	• Power Attachment Cord Assembly, 1,80 m
-34	86F2646	1	• Power Attachment Cord Assembly, 4,30 m
-46	14F1555	1	• Power Attachment Cord Assembly, 4,30 m
-49	14F1558	1	• Power Attachment Cord Assembly, 4,30 m
-54	14F1559	1	• Power Attachment Cord Assembly, 4,30 m





---

## Part Number Index



---

# Readers' Comments — We'd Like to Hear from You

**3746 Nways Multiprotocol Controller  
Models 900 and 950  
Parts Catalog**

**Publication No. S135-2015-01**

Please send us your comments concerning this book. We will greatly appreciate them and will consider them for later releases of the present book.

If you prefer sending comments by FAX or electronically, use:

- FAX: 33 4 93 24 77 97
- E-mail: FRIBMQF5 at IBMMAIL
- IBM Internal Use: LGERCF at LGEPROFS
- Internet: rcf\_lagaude@vnet.ibm.com

In advance, thank you.

Your comments:

\_\_\_\_\_  
Name

\_\_\_\_\_  
Address

\_\_\_\_\_  
Company or Organization

\_\_\_\_\_  
Phone No.



Fold and Tape

**Please do not staple**

Fold and Tape

PLACE  
POSTAGE  
STAMP  
HERE

IBM France  
Centre d'Etudes et Recherches  
Service 0798 - BP 79  
06610 La Gaude  
France

Fold and Tape

**Please do not staple**

Fold and Tape





Part Number: 03K5464

Printed in Denmark by IBM Danmark A/S

